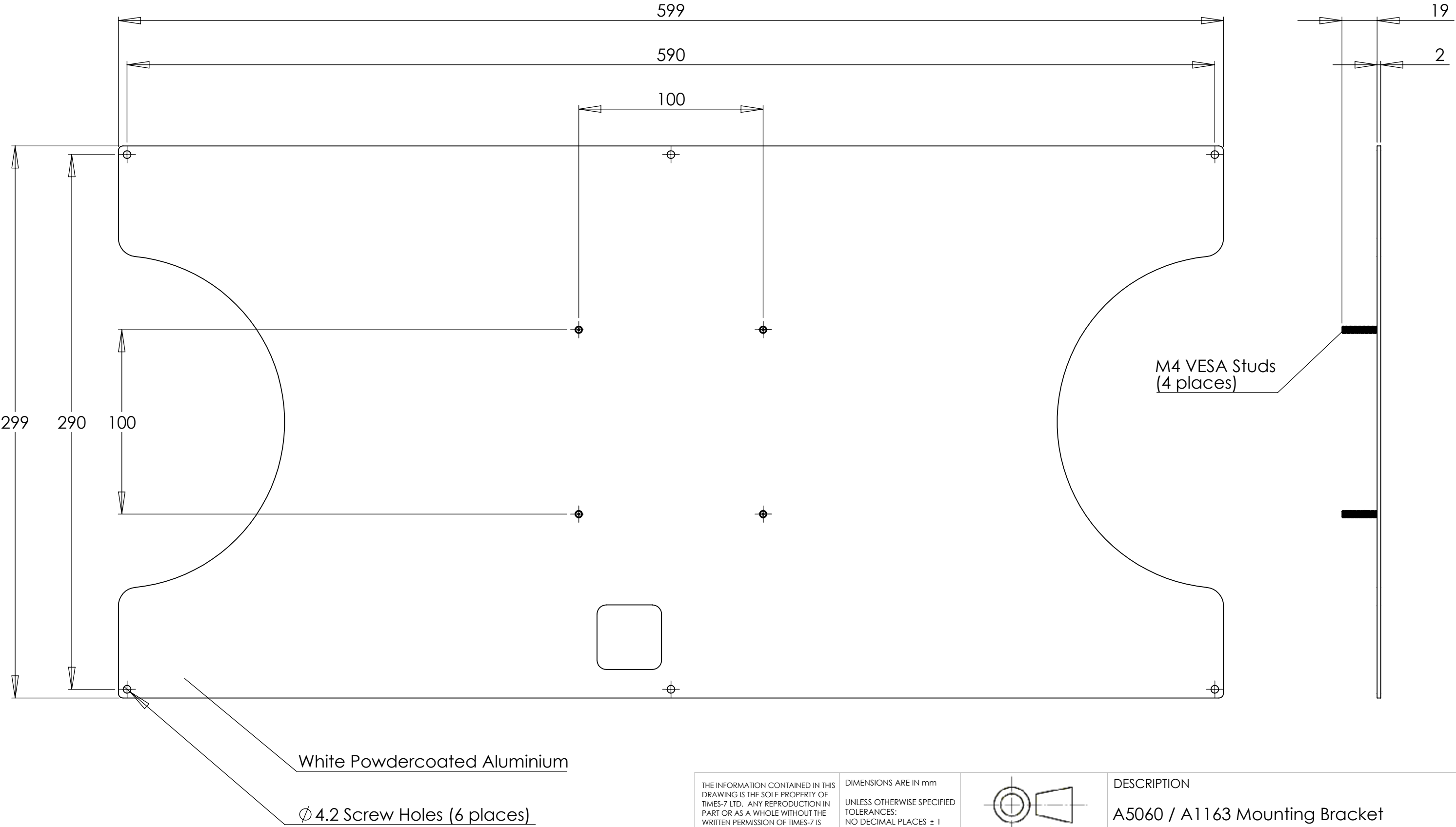


Part No.	Description
75248	A1163 True NearField Antenna (Formed Radome) ETSI - Black
75250	A1163 True NearField Antenna (Formed Radome) FCC - Black
75249	A1163 True NearField Antenna (Formed Radome) ETSI - White
75251	A1163 True NearField Antenna (Formed Radome) FCC - White

<p>THE INFORMATION CONTAINED IN THIS DRAWING IS THE SOLE PROPERTY OF TIMES-7 LTD. ANY REPRODUCTION IN PART OR AS A WHOLE WITHOUT THE WRITTEN PERMISSION OF TIMES-7 IS PROHIBITED.</p>		<p>DIMENSIONS ARE IN mm</p> <p>UNLESS OTHERWISE SPECIFIED TOLERANCES: NO DECIMAL PLACES ± 1 ONE PLACE DECIMAL ± 0.5</p>				<p>DESCRIPTION</p> <p>A1163 True NearField Antenna (Formed Radome)</p>	
<p>DRAWN BY:</p> <p>M. Price</p>		<p>DATE:</p> <p>26-10-23</p>		<p>SIZE</p> <p>A3</p>		<p>PART NO.</p> <p>Refer to table</p>	
<p>APPROVED BY:</p> <p>P. Wilcock</p>		<p>DATE:</p> <p>26-10-23</p>		<p>REV</p> <p>B</p>		<p>DO NOT SCALE DRAWING</p>	
						<p>SHEET 1 OF 3</p>	



THE INFORMATION CONTAINED IN THIS DRAWING IS THE SOLE PROPERTY OF TIMES-7 LTD. ANY REPRODUCTION IN PART OR AS A WHOLE WITHOUT THE WRITTEN PERMISSION OF TIMES-7 IS PROHIBITED.		DIMENSIONS ARE IN mm UNLESS OTHERWISE SPECIFIED TOLERANCES: NO DECIMAL PLACES ± 1 ONE PLACE DECIMAL ± 0.5			
--------------------------------------------------------------------------------------------------------------------------------------------------------------------------------	--	-----------------------------------------------------------------------------------------------------------------------	--	--	--